

# PRODUCT INFORMATION & MANUAL

## Human sIL-2R Instant ELISA

***BMS212INST***

Enzyme-linked immunosorbent assay for  
quantitative detection of human sIL-2R.

For research use only.

Not for diagnostic or therapeutic procedures.

128 Tests



### *Human sIL-2R Instant ELISA*

#### **North America**

Technical Support:

Research Products:

888.810.6168

858.642.2058

tech@eBioscience.com

Clinical Products:

877.726.8559

858.642.2058

tech@eBioscience.com

Customer Service:

888.999.1371

858.642.2058

info@eBioscience.com

Fax:

858.642.2046

#### **Europe/International\***

Technical Support:

+43 1 796 40 40-120

tech@eBioscience.com

Customer Service:

+43 1 796 40 40-304

europe@eBioscience.com

Fax:

+43 1 796 40 40-400



Bender MedSystems GmbH

Campus Vienna Biocenter 2

1030 Vienna, Austria

www.bendermedsystems.com

\* Customers outside North America and Europe may contact their eBioscience distributor listed on our website at [www.eBioscience.com/distributors](http://www.eBioscience.com/distributors).

## TABLE OF CONTENTS

1	Intended Use	3
2	Summary	3
3	Principles of the Test	5
4	Reagents Provided	6
5	Storage Instructions	6
6	Specimen Collection	7
7	Materials Required But Not Provided	8
8	Precautions for Use	9
9	Preparation of Reagents and Samples	11
10	Test Protocol	12
11	Calculation of Results	16
12	Limitations	19
13	Performance Characteristics	20
14	Bibliography	22
15	Ordering Information	26
16	Reagent Preparation Summary	26
17	Test Protocol Summary	28

## 1 Intended Use

The human sIL-2R Instant ELISA is an enzyme-linked immunosorbent assay for the quantitative detection of soluble human Interleukin-2 Receptor (CD25) in cell culture supernatants, human serum, plasma, urine, or other body fluids. The human sIL-2R Instant ELISA is **for research use only. Not for diagnostic or therapeutic procedures.**

## 2 Summary

Interleukin-2 (IL-2) has been described as a factor that promotes the growth and proliferation of human T-cells (17) thus occupying a pivotal role in the generation of the immune response (29). This proliferation of T lymphocytes is triggered by the interaction of IL-2 with its specific cell surface receptor following T lymphocyte activation. The receptor for IL-2 is composed of at least three distinct polypeptide subunits, the IL-2R $\alpha$ , IL-2R $\beta$  (10), and the IL-2R  $\gamma$  (33) chains (16) giving rise to a 55-65 kD membrane bound protein.

The genes encoding IL-2 and these three receptor subunits have been cloned and their complete primary structures have been deduced (5). Evidence has accumulated that suggests a critical role of IL-2R  $\beta$  in IL-2 signal transduction (28). IL-2R coupled tyrosine kinases are believed to play a crucial role in that signal transduction (36).

In addition to the de-novo expression of IL-2R by activated peripheral blood T-cells, a released and fully soluble form of IL-2R (sIL-2R) has been detected (27). It was shown that sIL-2R is present in vivo, at low levels in the sera of healthy persons and at markedly elevated levels in various pathological conditions like neoplastic disorders (19). The structural, functional and molecular characteristics of sIL-2R have been extensively investigated. By virtue of its ability to bind IL-2, this soluble molecule plays a role in the regulation of the immune response. The detection and quantitation of sIL-2R provides clinicians with a useful and simple means of assessing immune function in vivo as part of the investigation, management and prognosis of a broad spectrum of human diseases.

- hematologic malignancies (neoplasias):

Soluble IL-2R levels are significantly elevated in the sera of patients with adult T-cell leukemia (37), hairy cell leukemia (30), lymphocytic leukemia (18), Hodgkin's (24) and Non-Hodgkin's lymphoma (2), liver, breast and lung cancer (26).

- autoimmune or inflammatory diseases:

In patients with systemic lupus erythematosus (14), rheumatoid arthritis (12), progressive systemic sclerosis (22), polymyositis (38), Kawasaki disease (13), multiple sclerosis (8), and Diabetes type I (7) plasma concentrations of sIL-2 receptor are significantly elevated as compared to controls.

- infectious diseases:

Both viral and mycobacterial infections lead to high levels of soluble IL-2R found in Hepatitis (3), HIV-1 (25), infectious mononucleosis (23), measles (9), leprosy (35), tuberculosis (1) as well as in malaria (6).

- transplantation or rejection:

sIL-2R turned out to be a very useful marker for monitoring of transplant recipients who show significant elevations of sIL-2R serum levels experiencing rejection episodes in kidney (4), lung (11), heart (31), and liver (21) transplantations.

- chronic renal failure or dialysis:

Impaired renal function elevates serum sIL-2R as this molecule is actively transported into the urine (20, 32).

- skin:

sIL-2R is significantly elevated in patients with thermal injury (34).

- therapy:

Recombinant IL-2 as a cancer therapeutic can provoke release of sIL-2R (15).

### 3 Principles of the Test

An anti-human sIL-2R monoclonal coating antibody is adsorbed onto microwells. Human sIL-2R present in the sample or standard binds to antibodies adsorbed to the microwells; an HRP-conjugated monoclonal anti-human sIL-2R antibody binds to human sIL-2R captured by the first antibody.

Following incubation unbound enzyme conjugated anti-human sIL-2R is removed during a wash step and substrate solution reactive with HRP is added to the wells.

A coloured product is formed in proportion to the amount of soluble human sIL-2R present in the sample. The reaction is terminated by addition of acid and absorbance is measured at 450 nm. A standard curve is prepared from seven human sIL-2R standard dilutions and human sIL-2R sample concentration determined.

Figure 1

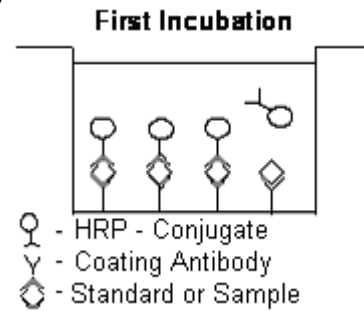


Figure 2

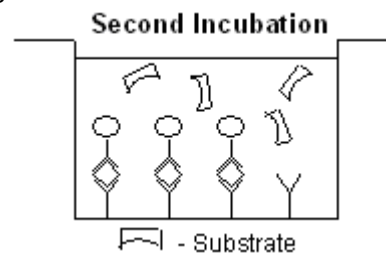
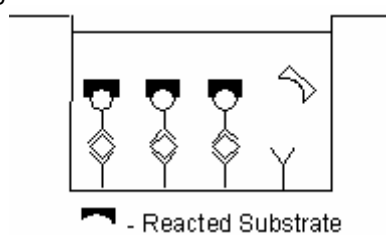


Figure 3



#### 4 Reagents Provided

- 1 aluminium pouch with a **Microwell Plate coated with Monoclonal Antibody** (murine) to human sIL-2R, Sample Diluent and **HRP-Conjugate** (anti-sIL-2R monoclonal (murine) antibody), lyophilized
- 2 aluminium pouches with a **human sIL-2R Standard curve (coloured)**
  - 1 bottle (25 ml) **Wash Buffer Concentrate** 20x (phosphate-buffered saline with 1% Tween 20)
  - 1 vial (15 ml) **Substrate Solution** (tetramethyl-benzidine)
  - 1 vial (12 ml) **Sample Diluent** (Use when an external predilution of the samples is needed)
  - 1 vial (15 ml) **Stop Solution** (1M Phosphoric acid)
- 2 adhesive **Plate Covers**

#### 5 Storage Instructions

Store ELISA plate and Standard curves or whole kit at -20°C. The plate, the standard curves can also be removed, stored at -20°C, remaining kit reagents can be stored between 2° and 8°C. Expiry of the kit and reagents is stated on labels.

The expiry of the kit components can only be guaranteed if the components are stored properly, and if, in case of repeated use of one component, the reagent is not contaminated by the first handling.

## 6 Specimen Collection

Cell culture supernatants, human serum, plasma, urine, or other body fluids are suitable for use in the assay. Remove the serum or plasma from the clot or red cells as soon as possible after clotting and separation.

Samples containing a visible precipitate must be clarified prior to use in the assay. Do not use grossly hemolyzed or lipemic specimens.

Samples must be stored frozen at -20°C to avoid loss of bioactive human sIL-2R. If samples are to be run within 24 hours, they may be stored at 2° to 8°C (for sample stability refer to 13).

Avoid repeated freeze-thaw cycles. Prior to assay, frozen serum or plasma should be brought to room temperature slowly and mixed gently.

## **7 Materials Required But Not Provided**

- 5 ml and 10 ml graduated pipettes
- 5  $\mu$ l to 1000  $\mu$ l adjustable single channel micropipettes with disposable tips
- 50  $\mu$ l to 300  $\mu$ l adjustable multichannel micropipette with disposable tips
- Multichannel micropipette reservoir
- Beakers, flasks, cylinders necessary for preparation of reagents
- Device for delivery of wash solution (multichannel wash bottle or automatic wash system)
- Microwell strip reader capable of reading at 450 nm (620 nm as optional reference wave length)
- Glass-distilled or deionized water
- Statistical calculator with program to perform linear regression analysis

## 8 Precautions for Use

- All chemicals should be considered as potentially hazardous. We therefore recommend that this product is handled only by those persons who have been trained in laboratory techniques and that it is used in accordance with the principles of good laboratory practice. Wear suitable protective clothing such as laboratory overalls, safety glasses and gloves. Care should be taken to avoid contact with skin or eyes. In the case of contact with skin or eyes wash immediately with water. See material safety data sheet(s) and/or safety statements(s) for specific advice.
- Reagents are intended for research use only and are not for use in diagnostic or therapeutic procedures.
- Do not mix or substitute reagents with those from other lots or other sources.
- Do not use kit reagents beyond expiration date on label.
- Do not expose kit reagents to strong light during storage or incubation.
- Do not pipette by mouth.
- Do not eat or smoke in areas where kit reagents or samples are handled.
- Avoid contact of skin or mucous membranes with kit reagents or specimens.
- Rubber or disposable latex gloves should be worn while handling kit reagents or specimens.
- Avoid contact of substrate solution with oxidizing agents and metal.
- Avoid splashing or generation of aerosols.
- In order to avoid microbial contamination or cross-contamination of reagents or specimens which may invalidate the test use disposable pipette tips and/or pipettes.
- Use clean, dedicated reagent trays for dispensing substrate reagent.

- Glass-distilled water or deionized water must be used for reagent preparation.
- Substrate solution must be at room temperature prior to use.
- Decontaminate and dispose specimens and all potentially contaminated materials as they could contain infectious agents. The preferred method of decontamination is autoclaving for a minimum of 1 hour at 121.5°C.
- Liquid wastes not containing acid and neutralized waste may be mixed with sodium hypochlorite in volumes such that the final mixture contains 1.0% sodium hypochlorite. Allow 30 minutes for effective decontamination. Liquid waste containing acid must be neutralized prior to the addition of sodium hypochlorite.

## **9 Preparation of Reagents and Samples**

### **9.1 Wash Buffer**

If crystals have formed in the Wash Buffer Concentrate, warm it gently until they have completely dissolved.

Pour entire contents (25 ml) of the Wash Buffer Concentrate into a clean 500 ml graduated cylinder. Bring to final volume to 500 ml with glass-distilled or deionized water. Mix gently to avoid foaming. The pH of the final solution should adjust to 7.4.

Transfer to a clean wash bottle and store at 2° to 25°C. Please note that Wash Buffer is stable for 30 days.

## 10 Test Protocol

- **Use plate immediately after removal from -20°C!**
  - **Do not wait until pellets have completely dissolved before applying samples - the binding reaction in the standard strips starts immediately after addition of water!**
  - **Do not try to dissolve pellets by pipetting up and down in the wells - some parts of the pellet could stick to the tip creating high variation of results**
  - **Perform the washing step with at least 400 µl of washing buffer as stated in the manual or fill the wells completely - otherwise any pellet residues sticking to the rim of the well will not be removed and create high variation of results**
  - **Allow the washing buffer to sit in the wells for a few seconds before aspiration**
  - **Remove covers of the standard strips carefully in order that all the lyophilised pellets remain in the wells**
- a. Determine the number of Microwell Strips required to test the desired number of samples plus Microwell Strips for blanks and standards (coloured). Each sample, standard, blank, and optional control sample should be assayed in duplicate. Remove extra Microwell Strips from holder and store in foil bag with the desiccant provided at -20°C sealed tightly. Place microwell strips containing the standard curve in position A1/A2 to H1/H2 (see Table 1).
  - b. Add 140 µl of distilled water to the sample wells.
  - c. Add distilled water to all standard and blank wells as indicated on the label of the standard strips (A1, A2 to H1, H2).

Table 1

Table depicting an example of the arrangement of blanks, standards and samples in the microwell strips:

	<b>1</b>	<b>2</b>	<b>3</b>	<b>4</b>
<b>A</b>	Standard 1 (20.00 ng/ml)	Standard 1 (20.00 ng/ml)	Sample 1	Sample 1
<b>B</b>	Standard 2 (10.00 ng/ml)	Standard 2 (10.00 ng/ml)	Sample 2	Sample 2
<b>C</b>	Standard 3 (5.00 ng/ml)	Standard 3 (5.00 ng/ml)	Sample 3	Sample 3
<b>D</b>	Standard 4 (2.50 ng/ml)	Standard 4 (2.50 ng/ml)	Sample 4	Sample 4
<b>E</b>	Standard 5 (1.25 ng/ml)	Standard 5 (1.25 ng/ml)	Sample 5	Sample 5
<b>F</b>	Standard 6 (0.63 ng/ml)	Standard 6 (0.63 ng/ml)	Sample 6	Sample 6
<b>G</b>	Standard 7 (0.31 ng/ml)	Standard 7 (0.31 ng/ml)	Sample 7	Sample 7
<b>H</b>	Blank	Blank	Sample 8	Sample 8

- d. Add 10 µl of each **Sample**, in duplicate, to the designated wells and mix the contents.
- e. Cover with a **Plate Cover** and incubate at room temperature (18°C to 25°C) for 3 hours, if available on a microplate shaker at 100 rpm.
- f. Remove **Plate Cover** and empty wells. Wash the microwell strips 3 times with approximately 400 µl Wash Buffer per well with thorough aspiration of microwell contents between washes. Take care not to scratch the surface of the microwells.

After the last wash, tap microwell strips on absorbent pad or paper towel to remove excess Wash Buffer. Use the microwell strips immediately after washing or place upside down on a wet absorbent paper for no longer than 15 minutes. Do not allow wells to dry.

- g. Pipette 100 µl of **TMB Substrate Solution** to all wells, including the blank wells.
- h. Incubate the microwell strips at room temperature (18° to 25°C) for about 10 minutes. Avoid direct exposure to intense light.

**The colour development on the plate should be monitored and the substrate reaction stopped (see point i. of this protocol) before positive wells are no longer properly recordable. Determination of the ideal time period for colour development has to be done individually for each assay.**

It is recommended to add the stop solution when the highest standard has developed a dark blue colour.

Alternatively the colour development can be monitored by the ELISA reader at 620 nm. The substrate reaction should be stopped as soon as Standard 1 has reached an OD of 0.6 – 0.65.

- i. Stop the enzyme reaction by quickly pipetting 100 µl of **Stop Solution** into each well, including the blank wells. It is important that the Stop Solution is spread quickly and uniformly throughout the microwells to completely inactivate the enzyme. Results must be read immediately after the Stop Solution is added or within one hour if the microwell strips are stored at 2 - 8°C in the dark.
- j. Read absorbance of each microwell on a spectro-photometer using 450 nm as the primary wave length (optionally 620 nm as the

reference wave length; 610 nm to 650 nm is acceptable). Blank the plate reader according to the manufacturer's instructions by using the blank wells. Determine the absorbance of both the samples and the human sIL-2R standards.

**Note: In case of incubation without shaking the obtained O.D. values may be lower than indicated below. Nevertheless the results are still valid.**

## 11 Calculation of Results

- Calculate the average absorbance values for each set of duplicate standards and samples. Duplicates should be within 20 per cent of the mean.
- Create a standard curve by plotting the mean absorbance for each standard concentration on the ordinate against the human sIL-2R concentration on the abscissa. Draw a best fit curve through the points of the graph.
- To determine the concentration of circulating human sIL-2R for each sample, first find the mean absorbance value on the ordinate and extend a horizontal line to the standard curve. At the point of intersection, extend a vertical line to the abscissa and read the corresponding human sIL-2R concentration.
- **\*Samples have been diluted 1:10, thus the concentration read from the standard curve must be multiplied by the dilution factor (x 10).**
- It is suggested that each testing facility establishes a control sample of known human sIL-2R concentration and runs this additional control with each assay. If the values obtained are not within the expected range of the control, the assay results may be invalid.
- A representative standard curve is shown in Figure 4. This curve cannot be used to derive test results. Every laboratory must prepare a standard curve for each group of microwell strips assayed.

\* N.B: There is a common dilution factor for samples due to the conjugate which must then be included in the calculation. The samples contribute 100 µl to the final volume per well. These 100 µl are composed of 90 µl of sample diluent plus 10 µl of the sample. This is a 1:10 dilution.

The remaining 50 µl to give 150 µl are due to the addition of 50 µl conjugate to all wells.

90 µl sample diluent and 50 µl conjugate results in 140 µl reconstitution volume, addition of 10 µl sample (90 µl + 10 µl = 1:10 dilution)

Figure 4

Representative standard curve for human sIL-2R Instant ELISA. Human sIL-2R was diluted in serial 2-fold steps in Sample Diluent, each symbol represents the mean of 3 parallel titrations.

Do not use this standard curve to derive test results. A standard curve must be run for each group of microwell strips assayed.

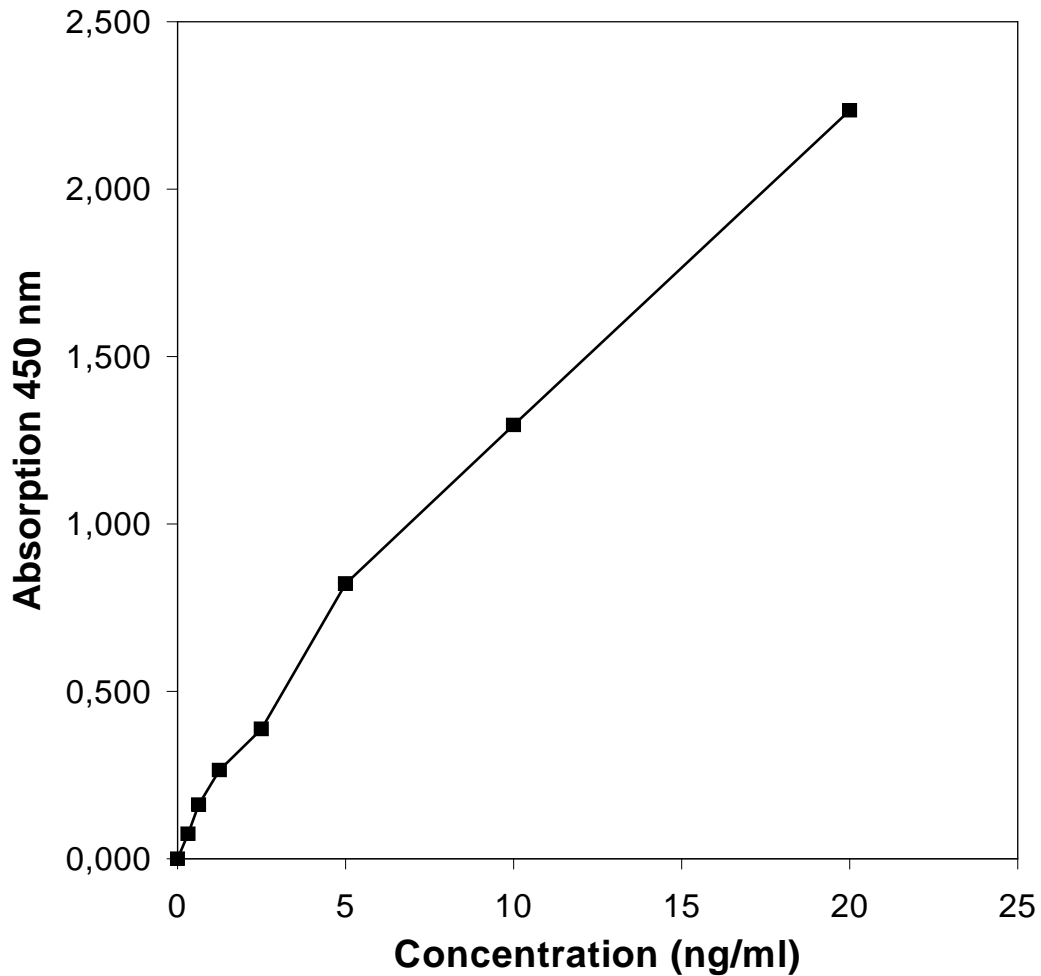


Table 2

Typical data using the human sIL-2R INSTANT ELISA

Measuring wavelength: 450 nm

Reference wavelength: 620 nm

Standard	human sIL-2R		O.D. Mean	C.V. (%)
	Concentration (ng/ml)	O.D. (450 nm)		
1	20.00	2.203	2.235	2.1
	20.00	2.139		
2	10.00	1.288	1.296	0.8
	10.00	1.303		
3	5.00	0.853	0.822	5.4
	5.00	0.790		
4	2.50	0.387	0.388	0.4
	2.50	0.389		
5	1.25	0.267	0.265	1.3
	1.25	0.262		
6	0.63	0.167	0.162	4.8
	0.63	0.156		
7	0.32	0.078	0.075	5.7
	0.32	0.072		
Blank	0	0.018		
	0	0.020		

The OD values of the standard curve may vary according to the conditions of assay performance (e.g. operator, pipetting technique, washing technique or temperature effects). Furthermore shelf life of the kit may affect enzymatic activity and thus colour intensity. Values measured are still valid.

## 12 Limitations

- Since exact conditions may vary from assay to assay, a standard curve must be established for every run.
- Bacterial or fungal contamination of either screen samples or reagents or cross-contamination between reagents may cause erroneous results.
- Disposable pipette tips, flasks or glassware are preferred, reusable glassware must be washed and thoroughly rinsed of all detergents before use.
- Improper or insufficient washing at any stage of the procedure will result in either false positive or false negative results. Empty wells completely before dispensing fresh wash solution, fill with Wash Buffer as indicated for each wash cycle and do not allow wells to sit uncovered or dry for extended periods.
- The use of radioimmunotherapy has significantly increased the number of patients with human anti-mouse IgG antibodies (HAMA). HAMA may interfere with assays utilizing murine monoclonal antibodies leading to both false positive and false negative results. Serum samples containing antibodies to murine immunoglobulins can still be analysed in such assays when murine immunoglobulins (serum, ascitic fluid, or monoclonal antibodies of irrelevant specificity) are added to the Sample.

## **13 Performance Characteristics**

### **13.1 Sensitivity**

The limit of detection of human sIL-2R defined as the analyte concentration resulting in an absorbance significantly higher than that of the dilution medium (mean plus 2 standard deviations) was determined to be 0.21 ng/ml (mean of 6 independent assays).

### **13.2 Reproducibility**

#### **13.2.1 Intra-assay**

Reproducibility within the assay was evaluated in 3 independent experiments. Each assay was carried out with 6 replicates of 6 serum samples containing different concentrations of human sIL-2R. 2 standard curves were run on each plate. The calculated overall intra-assay coefficient of variation was 7.7%.

#### **13.2.2 Inter-assay**

Assay to assay reproducibility within one laboratory was evaluated in 3 independent experiments by 3 technicians. Each assay was carried out with 6 replicates of 6 serum samples containing different concentrations of human sIL-2R. 2 standard curves were run on each plate. The calculated overall coefficient of variation was 10%.

### **13.3 Spike Recovery**

The spike recovery was evaluated by spiking 4 levels of human sIL-2R into pooled normal human serum. The unspiked serum was used as blank in these experiments. Recoveries were in overall mean 83%.

### **13.4 Dilution Parallelism**

4 serum samples with different levels of human sIL-2R were analysed at serial 2 fold dilutions with 4 replicates each. Recoveries were in overall mean 90%.

### **13.5 Sample Stability**

#### **13.5.1 Freeze-Thaw Stability**

Aliquots of serum samples (unspiked or spiked) were stored at -20°C and thawed several times, and the human sIL-2R levels determined. There was no significant loss of human sIL-2R immunoreactivity between 0 and 5 freeze-thaw cycles.

#### **13.5.2 Storage Stability**

Aliquots of serum samples (spiked or unspiked) were stored at -20°C, 2-8°C, room temperature (RT) and at 37°C, and the human sIL-2R level determined after 24, 48, and 96 h. There was no significant loss of human sIL-2R immunoreactivity during storage under above conditions.

### **13.6 Comparison of Serum and Plasma**

From 22 individuals, serum as well as EDTA plasma, citrate plasma, and heparin plasma obtained at the same time point were evaluated. All these blood preparations are suitable for human sIL-2R determinations. It is nevertheless highly recommended to assure the uniformity of blood preparations.

### **13.7 Specificity**

To define the specificity of this ELISA several proteins were tested for cross reactivity. There was no cross reactivity observed.

## 14 Bibliography

- 1) Brown A. E., K. T. Rieder, and H. K. Webster. (1989). Prolonged elevations of soluble interleukin-2 receptors in tuberculosis. *Am. Rev. Respir. Dis.* 139, 1036-1038.
- 2) Chilosi M., G. Semenzato, and F. Vinante. (1989). Increased levels of soluble interleukin-2 receptor in non-Hodgkin's lymphomas. Relationship with clinical, histologic and phenotypic features. *Am. J. Clin. Pathol.* 92, 186-191.
- 3) Chu C. M., and Y. F. Liaw. (1989). Serum levels of soluble Tac peptide in acute and chronic hepatitis B virus infection. *Clin. Immunol. Immunopathol.* 53, 52-58.
- 4) Cornaby A., M. A. Simpson, R. V. Rice, R. A. Dempsey, P. N. Madras, and A. P. Monaco. (1988). Interleukin-2 production in plasma, urine and plasma interleukin-2 receptor levels and urine cytology as a means of monitoring renal allograft recipients. *Transplantation Proc.* 20, 108-110.
- 5) Cosman D., D. P. Ceretti, A. Larsen, L. Park, C. March, S. Dower, S. Gills, and D. Urdall. (1984). Cloning, sequencing and expression of human interleukin-2 receptor. *Nature* 312, 768-771.
- 6) Deloron P., J. P. Lepers, and P. Coulanges. (1989). Evolution of the levels of soluble interleukin-2 receptors during *Plasmodium falciparum* and *P. vivax* malaria. *J. Clin. Microbiol.* 27, 1887-1889.
- 7) Giordano C., A. Galluzzo, and A. Marco. (1988). Increased soluble interleukin-2 levels in the sera of type I diabetic patients. *Diabetes Res.* 8, 135-138.
- 8) Greenberg S. J., L. Marcon, B. J. Hirevitz, T. A. Waldmann, and D. L. Nelson. (1988). Elevated levels of soluble interleukin-2 receptors in multiple sclerosis. *N. Engl. J. Med.* 319, 1019-1020.
- 9) Griffin D. E. B. J. Ward, E. Jauregui, R. T. Johnson, and A. Vaisberg. (1989). Immune activation in measles. *N. Engl. J. Med.* 320, 1667-1672.

- 10) Hatakeyama M., M. Tsudo, S. Minamoto, T. Kono, T. Doi, T. Miyata, M. Miyasaka, and T. Taniguchi. (1989). Interleukin-2 receptor b chain gene: Generation of three receptor forms by cloned human a and b chain cDNAs. *Science* 244, 551-556.
- 11) Keshavjee S. H., D. I. McRitchie, L. A. Rubin, J. Maurer, M. Girotti, and G. A. Patterson. (1989). The role of soluble interleukin-2 receptor levels in the diagnosis of rejection and infection in lung transplant recipients. *Clin. Inv. Med.* 12, B101.
- 12) Keystone E. C., K. M. Snow, C. Bombardier, C. H. Chang, D. L. Nelson, and L. A. Rubin. (1988). Elevated soluble IL-2 receptor levels in the sera and synovial fluids of patients with rheumatoid arthritis. *Arthritis Rheum.* 31, 844-849.
- 13) Lang B. A., E. D. Silverman, R. M. Laxer, V. Rose, D. L. Nelson, and L. A. Rubin. (1990). Serum soluble IL-2 receptor levels in Kawasaki disease. *J. Paeds.* 116, 592-596.
- 14) Lee G. L., M. Y. Chen, C. Y. Chuang, and C. Y. Chen. (1988). Serum interleukin-2 receptor in systemic lupus erythematosus and rheumatoid arthritis. *Chung Hua Min Juo Wei Sheng Wu Chi Mien I Hsueh Tsa Chih* 21, 16-22.
- 15) Lotze M. T., M. C. Custer, S. O. Sharrow, L. A. Rubin, D. L. Nelson, and S. A. Rosenberg. (1987). In vivo administration of purified human interleukin-2 to patients with cancer development of interleukin-2 receptor positive cells and circulating soluble interleukin-2 receptors following interleukin-2 administration. *Cancer Res.* 47, 2188-2195.
- 16) Minami Y., T. Kono, T. Miyazaki, and T. Taniguchi. (1993). The IL-2 receptor complex: Its structure, function and target genes. *Annu. Rev. Immunol.* 11, 245-267.
- 17) Morgan R. A., F. W. Ruscetti, and R. C. Gallo. (1976). Selective in vitro growth of T lymphocytes. *Science* 193, 1007-1008.
- 18) Motoi T., T. Uchiyama, T. Hori, K. Itoh, H. Uchino, and R. Ueda. (1989). Elevated serum soluble interleukin-2 receptor (Tac antigen) levels in chronic myelogenous leukemia patients with blastic crisis. *Blood* 74, 1052-1057.

- 19) Nelson D. L., D. K. Wagner, L. Marcon, et al. (1987). An analysis of soluble IL-2 receptors in human neoplastic disorders. In: Albertini A. Lentant C. Poeletti R. eds. *Biotechnology in Clinical Medicine*, New York: Raven Press, 277-286.
- 20) Peacocke M., M. L. McLaughlin, L. A. Rubin, and D. L. Nelson. (1986). Elevated serum levels of IL-2 receptors are present in patients maintained on chronic hemodialysis (Abstract). *Clin. Res.* 34, 605A.
- 21) Perkins J. D., D. L. Nelson, J. Rakela, P. M. Grambsch, and R. A. Krom. (1989). Soluble interleukin-2 receptor level in liver allograft recipients: an indicator of rejection. *Transplantation* 47, 77-81.
- 22) Peter J. B., M. S. Agopian, P. J. Clements, N. S. Telian, and D. E. Furst. (1989). Elevated serum levels of interleukin-2 receptor and IL-2 in diffuse and limited scleroderma. *Arthritis Rheum.* 32, 77.
- 23) Pizzolo G., M. Chilosi, and G. Semenzato. (1987). The soluble interleukin-2 receptor in haematological disorders. *Br. J. Haematol.* 67, 377-380.
- 24) Pizzolo G., M. Chilosi, and F. Vinante. (1987). Soluble interleukin-2 receptors in the serum of patients with Hodgkin's disease. *Br. J. Cancer* 55, 427-428.
- 25) Prince H. E., S. Kleinman, and A. E. Williams. (1988). Soluble IL-2 receptor levels in serum from blood donors seropositive for HIV. *J. Immunol.* 140, 1139-1141.
- 26) Rovelli F., P. Lissoni, and S. Crispino. (1988). Increased level of soluble interleukin-2 receptor in advanced solid tumors: a preliminary study. *Tumori.* 74, 633-637.
- 27) Rubin L. A., C. C. Kurman, and M. E. Fritz. (1985). Soluble interleukin-2 receptors are released from activated human lymphoid cells in vitro. *J. Immunol.* 135, 3172-3177.
- 28) Siegel J. P., M. Sharon, P. L. Smith, and W. J. Leonard. (1987). The IL-2 receptor b chain (p70): Role in mediating signals for LAK, NK and proliferative activities. *Science* 238, 75-78.
- 29) Smith K. A. (1988). Interleukin-2: inception, impact and implications. *Science* 240, 1169-1176.

- 30) Steis R. G., L. Marcon, and J. Clark. (1988). Serum soluble IL-2 receptor as a tumor marker in patients with hairy cell leukemia. *Blood* 71, 1304-1309.
- 31) Southern J. T. (1986). A comparison of sIL-2R levels and endomyocardial biopsy grades in the monitoring of cardiac allograft rejection. *J. Heart Transpl.* 5, 370.
- 32) Takamatsu T., N. Tasuda, T. Ohno, T. Kanoh, H. Uchino, and A. Fujisawa. (1988). Soluble interleukin-2 receptors in the serum of patients with chronic renal failure. *Tohoku J. Exp. Med.* 155, 434-437.
- 33) Takashita T., H. Asao, K. Ohrani, N. Ishii, S. Kumaki, N. Tanaka, H. Munakata, M. Nakamura, and K. Sugamura. (1992). Cloning of the  $\alpha$ -chain of the human IL-2 receptor. *Science* 257, 379-382.
- 34) Teodorczyk-Injeyan J. A., G. B. Sparkes, G. B. Mills, R. E. Falk, and W. J. Peters. (1989). Increase of serum interleukin-2 receptor in thermally injured patients. *Clin. Immunol. Immunopathol* 51, 205-215.
- 35) Tung S. K., E. Umland, and P. Matziner. (1987). Soluble serum IL-2 receptor levels in leprosy patients. *Clin. Exp. Immunol.* 68, 10-15.
- 36) Turner B., U. Rapp, H. App, M. Greene, K. Dosbashi, and J. Reed. (1991). Interleukin-2 induces tyrosine phosphorylation and activation of p72-74 Raf-1 kinase in T-cell line. *PNAS* 88, 1227-1231.
- 37) Yasuda N., P. K. Lai, and S. H. Ip. (1988). Soluble IL-2 receptors in sera of Japanese patients with adult T cell leukemia mark activity of disease. *Blood* 71, 1021-1026.
- 38) Wolf R. E., and B. A. Baethge. (1989). Cytokines and interleukin-2 receptors in polymyositis. *Arthritis Rheum.* 32, 31.

For literature update refer to [www.bendermedsystems.com/44.html](http://www.bendermedsystems.com/44.html)

## 15 Ordering Information

### North America

#### Technical Support:

Research Products:  
888.810.6168  
858.642.2058  
tech@eBioscience.com

Clinical Products:  
877.726.8559  
858.642.2058  
tech@eBioscience.com

#### Customer Service:

888.999.1371  
858.642.2058  
info@eBioscience.com

#### Fax:

858.642.2046

### Europe/International\*

#### Technical Support:

+43 1 796 40 40-120  
tech@eBioscience.com

#### Customer Service:

+43 1 796 40 40-304  
europe@eBioscience.com

#### Fax:

+43 1 796 40 40-400



Bender MedSystems GmbH  
Campus Vienna Biocenter 2  
1030 Vienna, Austria  
[www.bendermedsystems.com](http://www.bendermedsystems.com)

\* Customers outside North America and Europe may contact their eBioscience distributor listed on our website at [www.eBioscience.com/distributors](http://www.eBioscience.com/distributors).

## 16 Reagent Preparation Summary

### 16.1 Wash Buffer

Add **Wash Buffer Concentrate** 20 x (25 ml) to 475 ml distilled water

## 17 Test Protocol Summary

- Place standard strips in position A1/A2 to H1/H2.
- Add 140  $\mu\text{l}$  **distilled water** to sample wells.
- Add **distilled water**, in duplicate, to all standard and blank wells as indicated on the label of the standard strips.
- Add 10  $\mu\text{l}$  **Sample** to designated wells.
- Cover microwell strips and incubate 3 hours at room temperature (18° to 25°C) on a microplate shaker at 100 rpm
- Empty and wash microwell strips 3 times with 400  $\mu\text{l}$  **Wash Buffer**.
- Add 100  $\mu\text{l}$  of **TMB Substrate Solution** to all wells including blank wells.
- Incubate the microwell strips for about 10 minutes at room temperature (18° to 25°C).
- Add 100  $\mu\text{l}$  **Stop Solution** to all wells including blank wells.
- Blank microwell reader and measure colour intensity at 450 nm.

**Note: Samples have been diluted 1:10, thus the concentration read from the standard curve must be multiplied by the dilution factor (x 10).**